

**CNB 62**



## Introducing the very first CNB 62

CNB has been building yachts for more than thirty years, yachts which have made their mark on the world of sailing.

CNB is re-enforcing and building on its core values by joining with Solaris. CNB and Solaris share the same ambition, that of making unique boats resulting from a rare know-how that combines and optimises craftsmanship and technology.

This alliance between these two legendary brands will make it possible to offer you even more pleasure whilst living at sea.

The CNB 62 is a perfect distillation of the CNB spirit. She is elegant, sea-worthy and will deliver high performance – she is designed to be manageable and satisfying. From the deck plan to the interior, the design and layout ensure she can be sailed by a couple but offers the space to invite friends and family.

Pure pleasure.









CNB62

A new reference for offshore sailing



“



The CNB 62 is the ideal synthesis between the space and comfort of a CNB 66 with the ease of use of a CNB Bordeaux 60. The helm stations have been moved forward giving greater protection and are integrated with the relaxation and living areas. All sail controls are brought back to the helms and the carbon arch frees the cockpit from the mainsheet.

The longitudinal annex garage is an integral part of the design, the door to which provides a wonderful bathing platform. The interior design philosophy is focused on the owner with the master cabin forward – a concept directly inspired by our CNB 78.

The saloon is open to the galley, which is centrally located. The two large guest suites are located aft and are accessed by a spacious entry.

This layout delivers CNB's signature – a huge and luminous saloon as well as a very generous owner's area. This creates a feeling of privacy for the owner but offers plenty of space for friends and family in their own luxurious cabins aft.

Vincent Arnaud







Architect  
Philippe Briand Yacht design

“



The CNB 62 is the worthy heir to the renowned CNB Bordeaux 60.

Her seaworthy qualities will be further enhanced by a balanced, powerful hull combined with a substantial sail plan that’s well-suited to ocean-going programmes. With her taut yet generous lines, this double-chine hull equipped with twin-rudders will provide unequalled interior comfort and pleasure at the helm.

The compact yet sleek silhouette of the deck and superstructure is ergonomically designed for comfort and safety both at sea and at anchor, in keeping with the sleek, timeless style of her famous predecessors.

Philippe Briand

PHILIPPE BRIAND







## Cockpit











The cockpit  
Ergonomic and stylish

With its forward helm stations, the helmsman and guests benefit from excellent protection. The carbon arch frees up the cockpit and a large sundeck occupies the entire aft section.











Interior design  
Piaton Yacht design

“



Welcome to the CNB 62, the latest addition to the CNB family!  
We have endeavored to make this new model a faithful heir to the brand.  
It marks CNB's return to the market for the first crewless yacht, several years  
after the success of the Bordeaux 60', the brand's first semi-custom model  
but with volume and amenities that are truly incomparable!

With three cabins, the owner's cabin occupies the entire area forward  
of the mast, freeing up unprecedented space for a 60-footer.  
The open kitchen in the saloon is both functional and inviting.  
The aft cabins are accessed via a corridor that preserves the guests'  
privacy. The modular beds in the starboard can be configured  
as either a double or two singles.

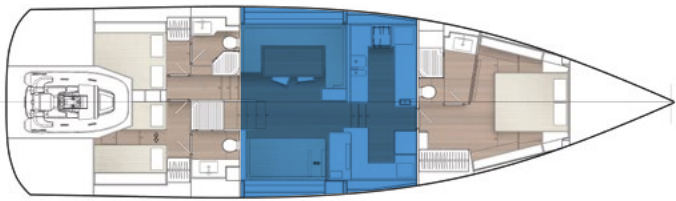
Fair winds to the 62!

Jean-Marc Piaton









**A convivial saloon**  
A multi-purpose saloon with a comfortable chart table seat that converts into two sofas.

**Elegant and bright**  
The many glazed areas and the subtle balance between wood and textiles add freshness and space.













CNB62 | Open galley



Open galley  
A spacious galley with wide work surfaces, plenty of refrigeration and all the equipment you need to cook in comfort.









Owner's suite











**Owner's suite**  
Inspired by the CNB 78, this suite features a central rectangular bed, abundant storage space and a soothing atmosphere.

**Volume and refinement**  
The white lacquered furniture highlights the natural wood of the bulkheads and creates a feeling of even more volume to this cabin.







**Starboard guest cabin**  
A spacious cabin with two single beds that can be converted into a double bed. A generous, fully-equipped bathroom with toilet and separate shower.



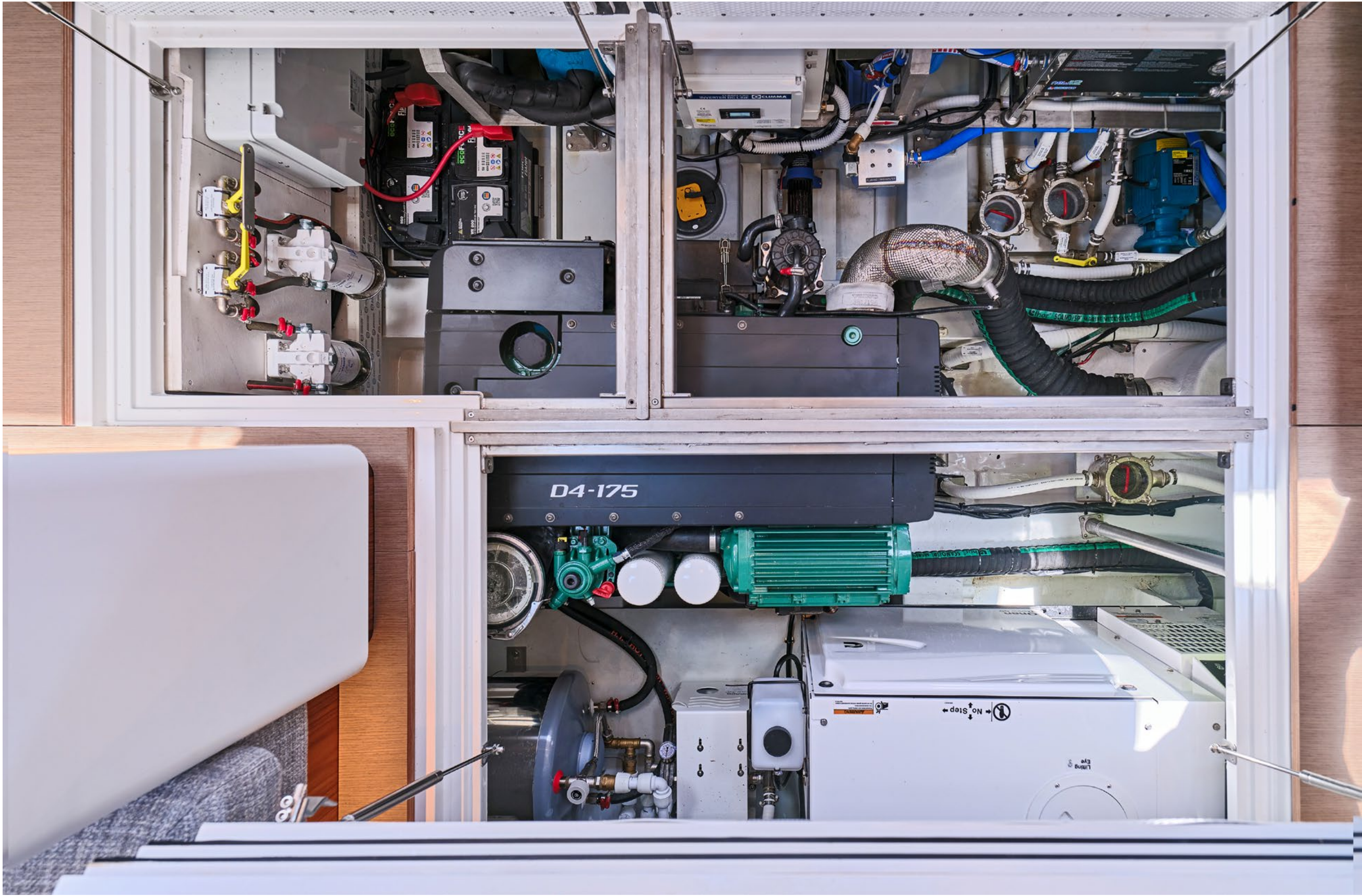




Port guest cabin  
Double bed, plenty of storage space and a spacious bathroom.







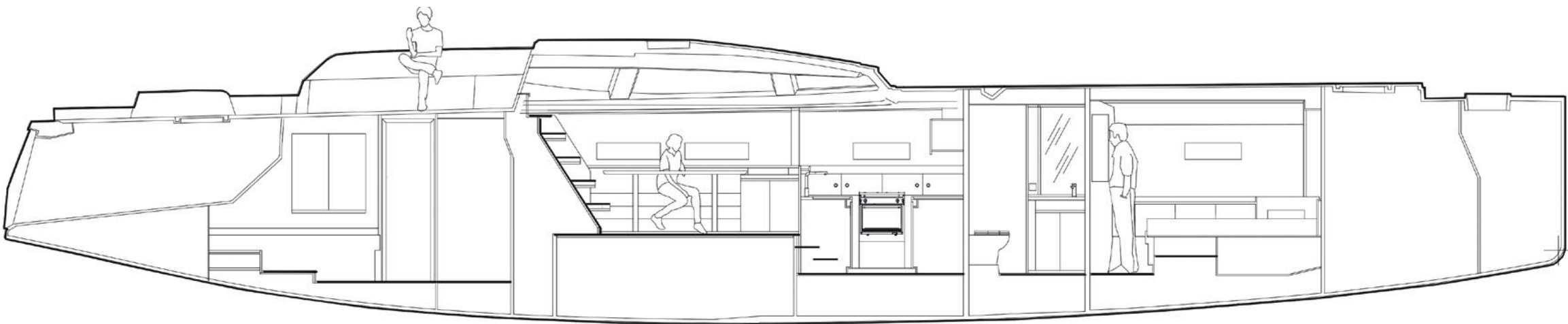
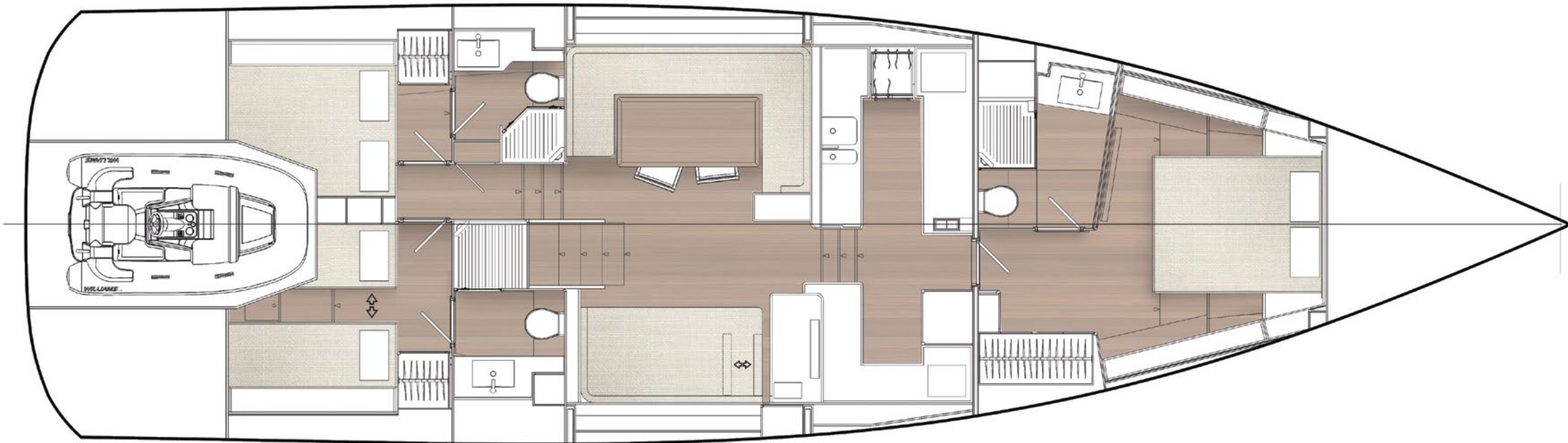
**Engine room**  
A centrally located engine room housing all the technical equipment. High-performance acoustic insulation and easy access for maintenance.













CNB62 | Specifications



• Naval architect	Philippe Briand
• Interior design	Jean-Marc Piaton
• Length overall (including bowsprit)	19.48 m / 63.9 ft
• LWL	17,68 m / 58 ft
• Maximum beam	5,33 m / 17.5 ft
• Draft – Standard cast iron keel	2.95 m / 9.67 ft
• Draft – Optional weldox keel – lead bulb	2.95 m / 9.67 ft
• Draft – Optional shoal draft weldox keel – lead bulb	2.45 m / 8.0 ft
• Fresh water capacity	800 litres / 211 (US) gal
• Fuel capacity	1000 litres / 264 (US) gal
• Mainsail	102 m2 / 1098 ft²
• Furling genoa (108 %)	94 m2 / 1012 ft²
• Staysail	44 m2 / 473 ft²
• Asymmetrical spinnaker	320 m2 / 3444 ft²
• E	7.50 m / 24.6 ft
• I	25.34 m / 83.1 ft
• J	6.92 m / 22.7 ft
• P	24.20 m / 79.4 ft







Solaris Yachts SRL  
Via Curiel, 49 • 33 051 Aquileia UD Italy  
Tél. : +39 431 91304  
cnb@cnbyachts.com

Conception : Piaton et Associés  
Photos : Nicolas Claris

This document is not contractual. The illustrations  
of the boat featured in this brochure may include  
optional equipment/accessories.

See you soon on the CNB 62



